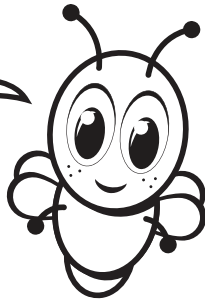


# Blinky's Family Challenge

I show wisdom when I ...  
*stay on God's path!*



## Follow God's Path

When you make the right choices, you're following Jesus and staying on God's path. When you're on God's path, you'll get to do all the great things God has planned for you!

### You'll Need

- Something to write with
- 1 paper per person

### Directions

1. One person draws a line on a piece of paper.
2. Pretend the line is God's path.
3. Everyone takes turns tracing the line.
4. Repeat steps 1-3, letting a different person draw the path each time.
5. When everyone's had a turn, draw pictures to show what you think God's plans are for you.

## Review Time!

### Say With Me *Ages 2-3*

1. *Say Together:* **I can make the right choice!**
2. *Say Together:* **I can stay on God's path!**

### Q&A *Ages 4-Kindergarten*

1. **How do you stay on God's path?**  
*By making right choices*
2. **Who can you follow so you'll stay on God's path?** *Jesus*



Lead your family through the Bible Plan *The First Sin* on the YouVersion Bible App. [www.bible.com](http://www.bible.com)



[www.life.church/kids](http://www.life.church/kids)

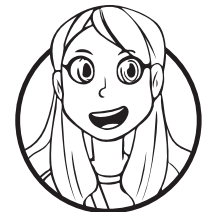
# The First Sin

## The Fall

## Week Four



Tell your family what's in  
my Adventure Bag!



Emily

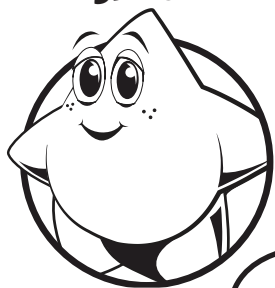


Interact with God's Word through the Bible App for Kids, activities, videos, coloring sheets, parent resources, and more!  
[www.BibleAppForKids.com](http://www.BibleAppForKids.com)



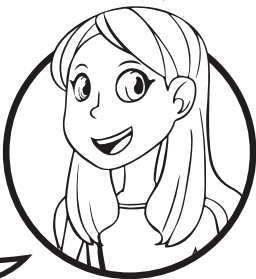
Follow LifeKids to sing along with this month's song,  
*Make Right Choices*. [www.life.church/kidsmusic](http://www.life.church/kidsmusic)

Shine



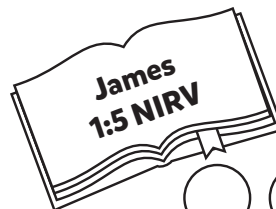
**Question:** Hey friends! **How do you make the right choice?**

Emily



**Answer:** Say it with me!  
**I ask God! God helps me make the right choice!**

Say the Bible verse with me!



Guy the Bible Guy

If any of you need wisdom,



I can make the right choice when I ask God, listen, and stay on God's path.

*Put a sticker on each Picture Pass.*

